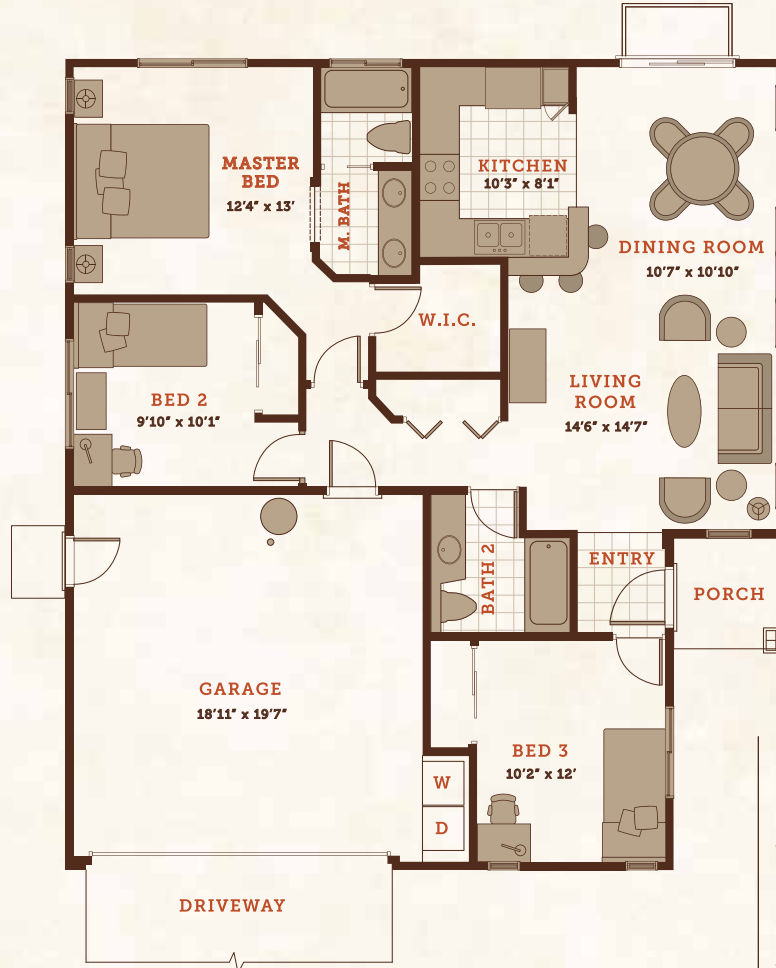




# KAHOMA VILLAGE

## ..-- Aukai (Plan 1) --..



- 3 Bedroom
- 2 Bath
- 1 Story

- Living Area: 1,116 sq. ft.
- Garage: 381 sq. ft.
- Porch: 36 sq. ft.

#### Exterior Architecture Styles:

- Plantation
- Craftsman

## ..-- FEATURES --..

- 2 architectural exterior styles - Plantation and Craftsman
- Kitchen opens to dining and living room
- Granite countertops in kitchen
- Large viewing windows in living room
- Sliding glass door in dining room
- Walk-in closet in master bedroom
- Double lavatories in master bath
- Porcelain panel with wainscot accent band in bath
- Cast iron tub/shower
- Quartzite countertops in bathrooms
- Mirrored wardrobe doors
- Large linen closet
- 9' ceilings on first floor
- Ceiling fan junction boxes in all bedrooms and living room
- Side door in garage
- 80 gallon solar water heater
- Fenced private yards
- Optional split a/c system

© 2017 Kahoma Village. All rights reserved. | [www.kahomavillage.com](http://www.kahomavillage.com) | T: 808.661.0002 | F: 888.673.0241 | [info@kahomavillage.com](mailto:info@kahomavillage.com)

This is an artist's depiction of Developer's current proposed development concepts for the Project, which concepts continue to evolve and are subject to change without notice. All dimensions and square footage calculations are approximate and subject to change. Furnishings are represented for illustration purposes only. Units are not furnished. Any renderings, photos, drawings or other representations as to units or other elements of the Project that are delivered or shown to prospective purchasers may not accurately portray such units and other elements, and do not constitute a representation by Developer. Prices are subject to change without notice.