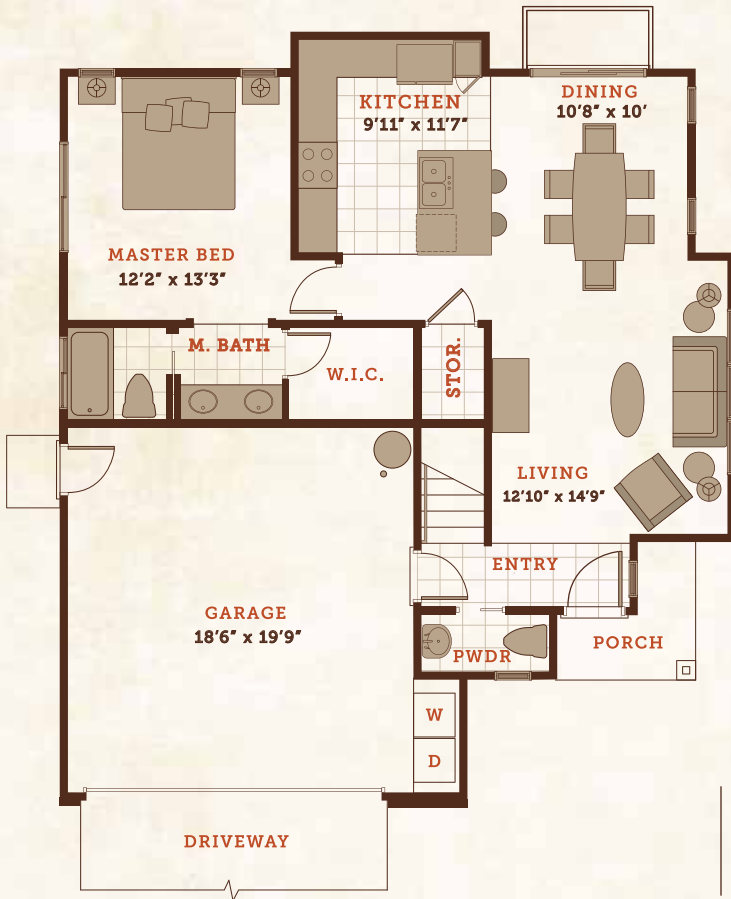




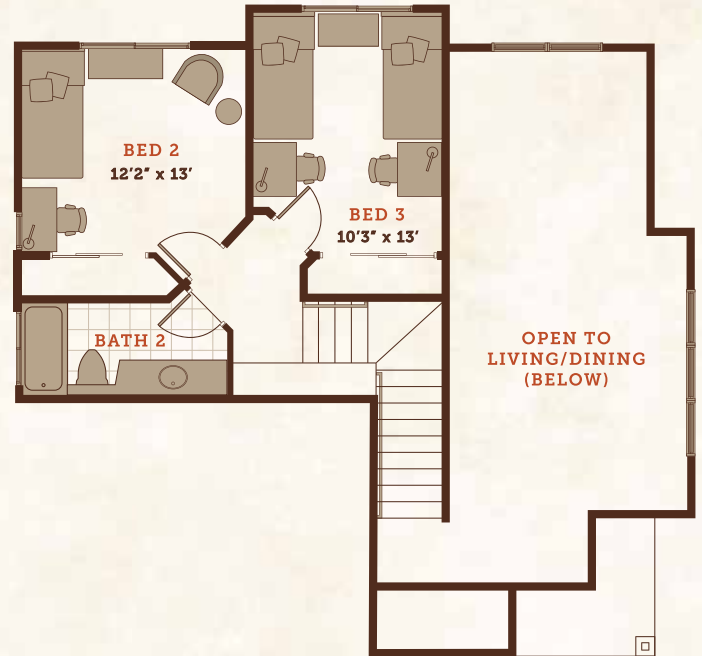
KAHOMA VILLAGE

— Poholua (Plan 2) —

FIRST FLOOR



SECOND FLOOR



- 3 Bedroom
- 2.5 Bath
- 2 Story

- Living Area: 1,239 sq. ft.
- Garage: 380 sq. ft.
- Porch: 38 sq. ft.

- Exterior Architecture Styles:
- Plantation
 - Cottage

— FEATURES —

- 2 architectural exterior styles - Plantation and Cottage
- Vaulted ceiling in living room and dining room
- Sliding glass door in dining room
- Island kitchen
- Granite countertops in kitchen
- Master bedroom on the first floor
- Walk-in closet in master bathroom
- Double lavatories in master bath
- Linen cabinet on upstairs landing with countertop
- Quartzite countertops in bathrooms
- Porcelain panel with wainscot accent band in bath
- Cast iron tub/shower
- 9' ceilings on first floor
- 8' ceilings on second floor
- Ceiling fan junction boxes in all bedrooms and living room
- Side door in garage
- 80 gallon solar water heater
- Fenced yards
- Optional split a/c system

© 2017 Kahoma Village. All rights reserved. | www.kahomavillage.com | T: 808.661.0002 | F: 888.673.0241 | info@kahomavillage.com

This is an artist's depiction of Developer's current proposed development concepts for the Project, which concepts continue to evolve and are subject to change without notice. All dimensions and square footage calculations are approximate and subject to change. Furnishings are represented for illustration purposes only. Units are not furnished. Any renderings, photos, drawings or other representations as to units or other elements of the Project that are delivered or shown to prospective purchasers may not accurately portray such units and other elements, and do not constitute a representation by Developer. Prices are subject to change without notice.