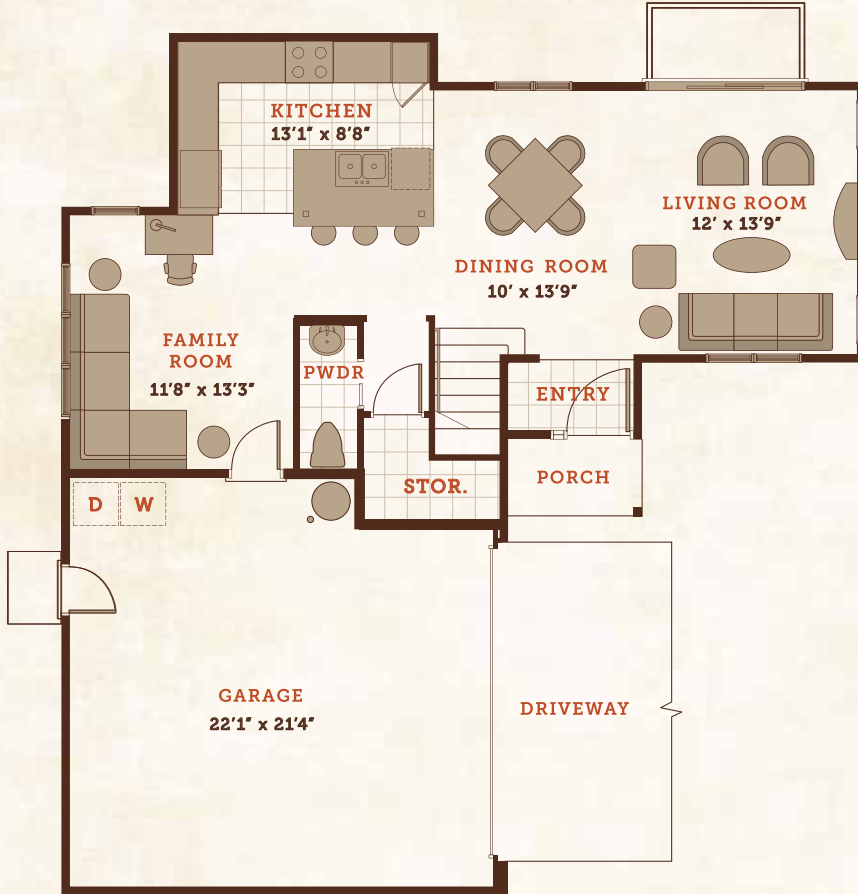




KAHOMA VILLAGE

--- Ho'opae (Plan 5) ---

FIRST FLOOR



SECOND FLOOR



- 4 Bedroom
- 2.5 Bath
- 2 Story

- Living Area: 1,588 sq. ft.
- Garage: 449 sq. ft.
- Porch: 28 sq. ft.

- Exterior Architecture Styles:
- Plantation

--- FEATURES ---

- Island kitchen with family room
- Granite countertops in kitchen
- Sliding glass door at living room
- Large walk-in closet in master bedroom
- Double lavatories in master bath
- Quartzite countertops in bathrooms
- Porcelain panel with wainscot accent band in bath
- 9' ceilings on first floor
8' ceilings on second floor
- Ceiling fan junction boxes in all bedrooms and living room
- Side door in garage
- 80 gallon solar water heater
- Fenced yards
- Optional split a/c system

© 2017 Kahoma Village. All rights reserved. | www.kahomavillage.com | T: 808.661.0002 | F: 888.673.0241 | info@kahomavillage.com

This is an artist's depiction of Developer's current proposed development concepts for the Project, which concepts continue to evolve and are subject to change without notice. All dimensions and square footage calculations are approximate and subject to change. Furnishings are represented for illustration purposes only. Units are not furnished. Any renderings, photos, drawings or other representations as to units or other elements of the Project that are delivered or shown to prospective purchasers may not accurately portray such units and other elements, and do not constitute a representation by Developer. Prices are subject to change without notice.