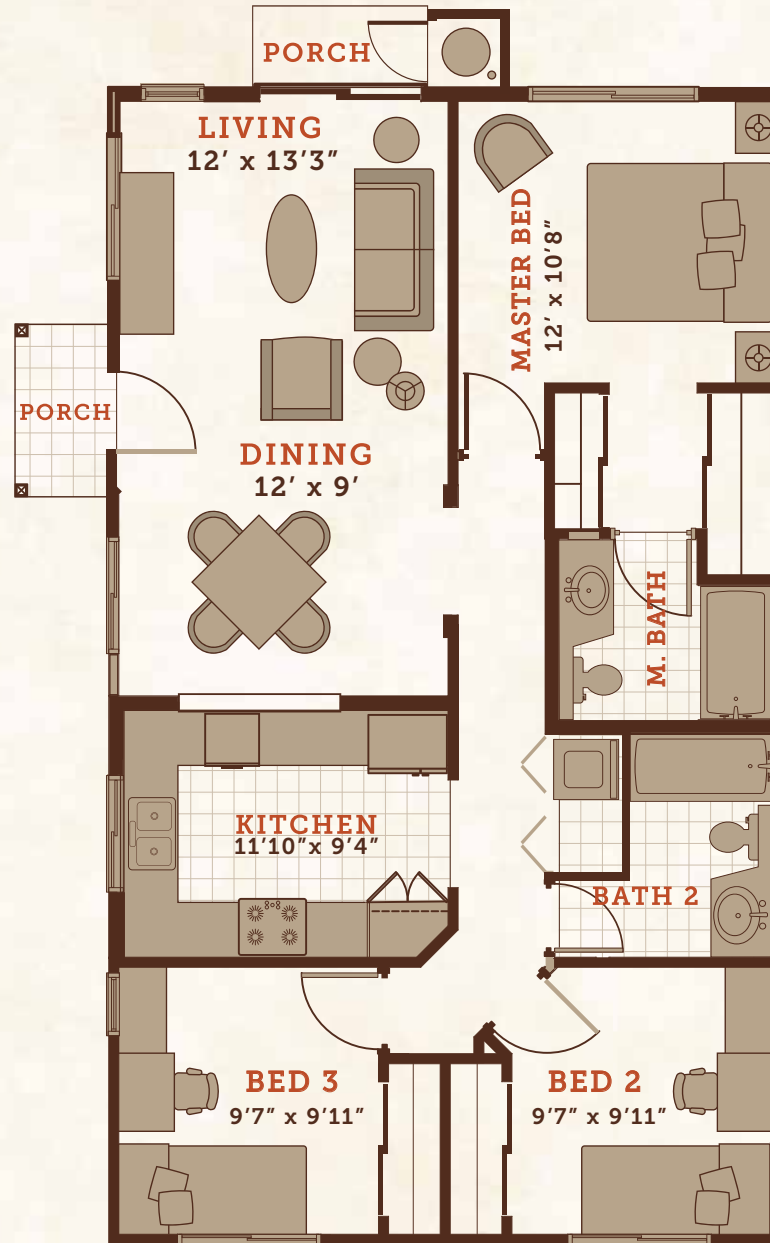




# KAHOMA VILLAGE

-- Holokahiki (Plan CR) --



- 3 Bedroom
- 2 Bath
- 1 Story

- Living Area: 1,036 sq. ft.
- Porch: 22 sq. ft.

- Exterior Architecture Styles:
- A & B

## -- FEATURES --

- Fenced yards
- Porcelain tile tub surrounds
- Cast iron tubs
- Mirrored wardrobe doors
- Quartzite kitchen countertops
- Quartzite bath countertops with undermount lavatory
- GE washer/dryer
- Microwave/hood over range
- 2 parking stalls
- Optional split a/c systems

© 2017 Kahoma Village. All rights reserved. | [www.kahomavillage.com](http://www.kahomavillage.com) | T: 808.661.0002 | F: 888.673.0241 | [info@kahomavillage.com](mailto:info@kahomavillage.com)

This is an artist's depiction of Developer's current proposed development concepts for the Project, which concepts continue to evolve and are subject to change without notice. All dimensions and square footage calculations are approximate and subject to change. Furnishings are represented for illustration purposes only. Units are not furnished. Any renderings, photos, drawings or other representations as to units or other elements of the Project that are delivered or shown to prospective purchasers may not accurately portray such units and other elements, and do not constitute a representation by Developer. Prices are subject to change without notice.